

THE USE OF PRONUNCIATION BINGO GAME TO IMPROVE STUDENTS' PRONUNCIATION

Ahmad Suhaili¹, Asep Kurniawan²
STIT Al-Khairiyah, STKIP Banten
Cilegon, Indonesia
ahmadsuhaili618@gmail.com
asepkurniawan010487@gmail.com

ABSTRACT

This research is mainly purposed to find out whether there is influence of using pronunciation bingo game to improve students' pronunciation at first grade in MTs Alkhaeriyah Kepandean Ciruas Serang. The game is applied by experiment class and control class. The method of this research is true-experiment research. The population in this research is the first grade in MTs Alkhaeriyah Ciruas Serang. The writer took three classes with total number of the first grade are 132 Students. They are three classes, 44 Students from class VIIA and 44 Students from class VIIB and 44 Students from class VIIC. The writer took 60 students as sample and uses random sampling because the writer uses true-experiment method. To analyze this research the writer uses T-test method and to get the data the writer uses observation technique, and test as instrument of research. The observation is to know the students' pronunciation at the first grade in MTs Alkhaeriyah Kepandean Ciruas Serang, while, test is to know the influence use of pronunciation bingo game to improve students' pronunciation at the first grade in MTs Alkhaeriyah Kepandean Ciruas Serang. After having analysis data, there is influence using of pronunciation bingo game to improve students' pronunciation between experiment class and control class, based on the calculation is know that t_{table} with level significance 5 % = 2,00 and with level significance 1% = 2,65 so $t_{\text{observation}} = 20,34 > t_{\text{table}} = 2,00$ or $t_{\text{observation}} = 20,34 > t_{\text{table}} = 2,65$. the conclusion is that the writer reject $H_0 : t_o < t_t$. It means there is no influence the use of pronunciation bingo game to improve students' pronunciation at the first grade in MTs Alkhaeriyah Kepandean Ciruas Serang and receive $H_a : t_o > t_t$. it means there is influence the use of pronunciation bingo game to improve students' pronunciation at the first grade in MTs Alkhaeriyah Kepandean Ciruas Serang.

Keyword: Pronunciation, Bingo Game, experiment research, Control Class, Al-khairiyah

INTRODUCTION

Communication can be trouble when the listener and speaker are from different linguistic backgrounds.. Even student with significant education experience can have problems in pronunciation. Perhaps early pronunciation was taught by non-native speaker who his self has oral production problems.

The pronunciation is one of component of English language especially in developing speaking skill. Pronunciation is important if no one understands what a speaker says, it does not matter how many words or tenses he knows so he can communicate. Students has different problem according to their mother tongues. Then, teaching pronunciation is to avoid the mispronunciation between speakers in their communication. The interfering teaching English pronunciation to the second or foreign language not only in terms of accent it mean intonation some of country has different accent, feature of Java accents may lead to Java people sounding. The second can be interfered tone or mood of utterance.

A lot of pronunciation teaching tends to be done in response to errors which students make in the classroom (Kelly, 2000). It means that teaching pronunciation is not prepared before.

According to Kenworthy Joanne, et.al (2002:97) says that “The English spelling system is rich in both regularities and irregularities which present problems to non-native learners (and to English-speaking children learning to write their language)”.

Teaching pronunciation is not easy to do, many teachers get difficulty in teaching pronunciation to their students. Then, this study will present a pronunciation teaching strategy to intermediate school students. Because of the problem mention above the writer wrote about “The Use of Pronunciation bingo Game to improve students’ pronunciation.

Pronunciation bingo is one of games that used by teachers in teaching pronunciation. It is a really popular pronunciation game and it seems a little complicated at first but it’s actually really easy. Students love pronunciation bingo when they know how to play it. It is great fun.

By providing game as a media in teaching pronunciation to intermediate school students, I hope that it will make them fell something pleasant and fell it different from what they use to get in the class. The use of game will stimulate them to be more active and it is really match with the students’ world where pre-level

students liked to study through movement. By the activity, they will give an opportunity to express their mind, emotion, feeling and attitudes when they involve in it. Reviewed at the explanation above, I assume that the use of game is one of good and effective ways to teach and to motivate them as young learners to study.

METHOD

The writer take the true – experiment research as one of the instrument used. According to Nunan that true-experiment has both pre – and posttest, experimental and control group, and random assignment of the subjects. On the other hand, quantitative research is prominent and reliable, objective, generalizable, results oriented, and assumes the existence of facts that are somehow outside and are not dependent on the observer or researcher (Nunan, 1992).

Its means that writer uses this method to analyze the collected data from the field and must go to the place of research, while to test using the pronunciation bingo game. In this research there are two variables used there are: The use of Pronunciation Bingo Game as a variable X while Improve Students' Pronunciation as variable Y.

DISCUSSION

Data of the research are taken from the first grade student of MTs Al-

Khairiyah Kepandean Ciruas, with a total of population 193 students. In this research paper, the writer takes 60 students as the sample. In this discussion, the writer will explain the result of investigation using statistical analysis.

1. Test of Normality

a. Test Normality of Experiment Class

To investigate student's worksheet gives and describes score in table with formula:

Student's Final Score =

$$\frac{\text{Student's Raw Score}}{\text{Ideal Maximum Score (30)}} \times 100$$

Based on the table above, the writer will arrange one by one from the lowest until high score from that table, as follows:

20	20	20	23	23	23	27	27	27	27
30	30	30	33	33	33	33	37	37	37
37	37	40	40	43	43	47	47	47	53

1. Find out range, with formula

$$\begin{aligned} R &= (H - L) \\ &= (53 - 20) \\ &= 33 \end{aligned}$$

2. Looking for the class interval, with formula:

$$\begin{aligned} K &= 1 + 3, 3 (\log n) \\ &= 1 + 3, 3 (\log .30) \end{aligned}$$

$$= 1 + 3,3 (1,48)$$

$$= 1 + 4,88$$

$$= 5,88 = 6 \text{ (become)}$$

3. Looking for the long class, with formula:

$$P = \frac{R}{K}$$

$$= \frac{33}{6}$$

$$= 5,5 = 6 \text{ (become)}$$

4. Looking for mean

$$\bar{X} = \frac{\sum FX}{\sum F} = \frac{999}{30}$$

$$= 33,3$$

5. Looking for median

$$Me = b + p \left\{ \frac{\frac{1}{2}N - Fka}{F} \right\}$$

$$= 37,5 + 6 \left\{ \frac{\frac{1}{2}15 - 13}{9} \right\}$$

$$= 37,5 + 6 \left\{ \frac{2}{9} \right\}$$

$$= 37,5 + 6 (0,22)$$

$$= 37,5 + 1,32$$

$$= 38,82$$

6. Looking for mode

$$Mo = b + p \left[\frac{bi}{b1 + b2} \right]$$

$$= 37,5 + 6 \left[\frac{9-7}{(9-7) + (9-4)} \right]$$

$$= 37,5 + 6 \left[\frac{2}{2+5} \right]$$

$$= 37,5 + 6 (0,28)$$

$$= 37,5 + 1,68$$

$$= 39,18$$

7. Looking for mode

$$Mo = b + p \left[\frac{bi}{b1 + b2} \right]$$

$$= 37,5 + 6 \left[\frac{9-7}{(9-7) + (9-4)} \right]$$

$$= 37,5 + 6 \left[\frac{2}{2+5} \right]$$

$$= 37,5 + 6 (0,28)$$

$$= 37,5 + 1,68$$

$$= 39,18$$

8. Making assist table deviation standard

Table 4.3

Assist Table Deviation Standard Pre-test in

Experiment Class

Interval	F	X	FX	(X - \bar{X})	(X - \bar{X}) ²	F(X - \bar{X}) ²
20 – 25	6	22,5	135	-10,8	116,64	699,84
26 – 31	7	28,5	199,5	-4,8	23,04	161,28
32 – 37	9	34,5	310,5	1,2	1,44	12,96
38 –	4	40,	162		51,8	207,3

43	1	5	139	7,2	4	6
44 –		46,	,5	13,	174,	522,7
49		5	52,	2	24	2
50 -		52,	5	19,	364,	368,6
55		5		2	64	44
Σ	3		999			1972,8

a. Accounting deviation standard

$$\begin{aligned}
 SD &= \sqrt{\frac{\sum f(x - \bar{x})^2}{N}} \\
 &= \sqrt{\frac{1972,8}{30}} \\
 &= \sqrt{65,76} \\
 &= 8,10
 \end{aligned}$$

b. Test normality of Pre-test in
Experiment Class

Table 4.4

26 –				0,24	7,3	7
31				44	3	
	31,	-0,22	0,41			
	5		29			
32 –				0,28	8,4	9
37				21	6	
	37,	0,51	0,69			
	5		5			
38 –				0,19	5,9	4
43				94	8	
	43,	1,25	0,89			
	5		44			
44 –				0,08	2,4	3
49				28	8	
	49,	2,00	0,97			
	5		72			
50 –				0,01	0,5	1
55				97	9	
	55,	2,74	0,99			
	5		69			

Test of Normality with Chi Square (X^2)

Interval	Classes Limit	Z_{account}	Z_{table}	LZ_{table}	E_i	O_i
	19,5	-1.70	0.04			
20 – 25			46	0,12	3,7	6
	25,5	-0.96	0.16			
			85			

c. Accounting X^2 (chi square),
with formula:

$$\begin{aligned}
 X^2_{\text{account}} &= \sum \frac{(O_i - E_i)^2}{E_i} \\
 &= \frac{(6-3,71)^2}{3,71} + \frac{(7-7,33)^2}{7,33} + \frac{(9-8,46)^2}{8,46} + \frac{(4-5,98)^2}{5,98} + \frac{(3-2,48)^2}{2,48} + \frac{(1-0,59)^2}{0,59} \\
 &= 1,41+0,01+0,03+0,65+0,10+0,28 \\
 &= 2,48
 \end{aligned}$$

d. Looking for degree of
freedom (df), with formula:

$$\begin{aligned}
 Df &= k - 3 \\
 &= 6 - 3
 \end{aligned}$$

$$= 3$$

e. Determining X^2_{table} with
signification 5% and df (3)

$$\begin{aligned} X^2_{table} &= (1 - \alpha) (df) \\ &= (1 - 0,05) (3) \\ &= (0,95) (3) \\ &= 7,81 \end{aligned}$$

Based on the calculation above is known that $X^2_{account} = 2,48$ and $X^2_{table} = 7,81$ so $X^2_{account} = 2,48 < X^2_{table} = 7,81$. The concluded that the test (sample) of the population is normal distribution.

The Result of Post-test in Experiment Class

5	6	6	7	7	7	73	73	73	73
3	3	7	0	0	0				
7	7	7	8	8	8	83	83	83	83
7	7	7	0	0	0				
8	8	8	9	9	9	10	10	10	10
7	7	7	0	0	0	0	0	0	0

1. Find out range, with formula

$$\begin{aligned} R &= H - L \\ &= 100 - 53 = 47 \end{aligned}$$

2. Looking for the class interval, with formula:

$$\begin{aligned} K &= 1 + 3,3 (\log n) \\ &= 1 + 3,3 (\log. 30) \\ &= 1 + 3,3 (1,48) \\ &= 1 + 4,88 \\ &= 5,88 = 6 \text{ (become)} \end{aligned}$$

3. Looking for the long class, with formula:

$$p = \frac{R}{K} = \frac{47}{6} = 7,83 = 8 \text{ (become)}$$

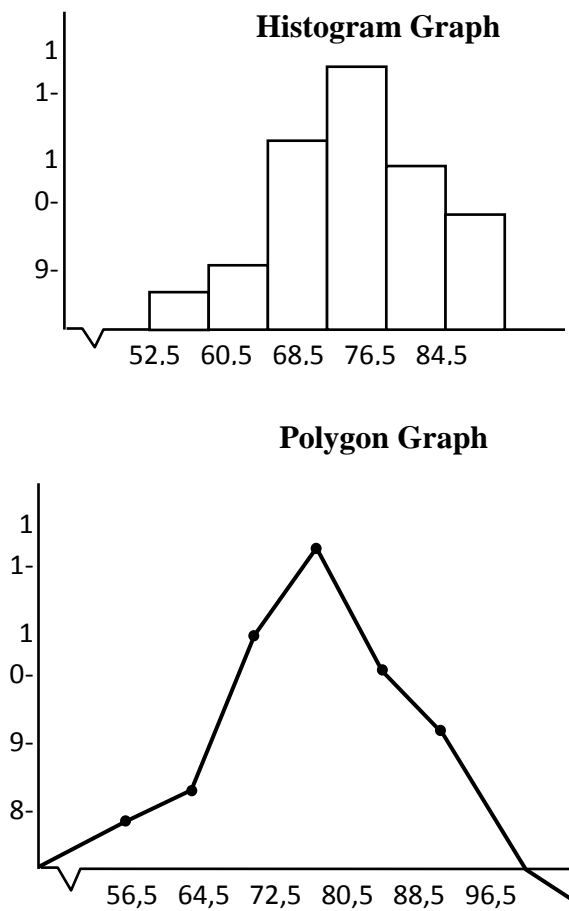
4. Making distribution frequency table

Table 4.5

Distribution Frequency

Interval	F	Fk _a	X	FX	Real Limit
53 – 60	1	1	56,5	56,5	52,5 – 60,5
61 – 68	2	3	64,5	129	60,5 – 68,5
69 – 76	7	10	72,5	507,5	68,5 – 76,5
77 – 84	10	20	80,5	805	76,5 – 84,5
85 – 92	6	26	88,5	531	84,5 – 92,5
93 – 100	4	30	96,5	386	92,5 – 100,5
Σ	30			2415	

5. Histogram and Polygon Graph



6. Looking for mean

Interval	Class Limit	Z_{account}	Z_{table}	Lz_{table}	E_i	O_i
	52,5	-2,82	0,0024			
53 – 60				0,0193	0,57	1
	60,5	-2,02	0,0217			
61 – 68				0,0914	2,74	2
	68,5	-1,21	0,1131			
69 – 76				0,2315	6,94	7
	76,5	-0,40	0,3446			
77 – 84				0,3108	9,32	10
	84,5	0,40	0,6554			
85 – 92				0,2315	6,94	6
	92,5	1,21	0,8869			
93 – 100				0,0914	2,74	4
	100,5	2,02	0,9783			

$$\bar{X} = \frac{\sum FX}{\sum F} = \frac{2415}{30} = 80,5$$

7. Looking for median

$$\begin{aligned}
 Me &= b + p \left\{ \frac{\frac{1}{2}N - Fka}{F} \right\} \\
 &= 84,5 + 6 \left\{ \frac{15-10}{10} \right\} \\
 &= 84,5 + 6 \left\{ \frac{5}{10} \right\} \\
 &= 84,5 + 6 (0,5) \\
 &= 84,5 + 3 \\
 &= 87,5
 \end{aligned}$$

8. Looking for mode

$$\begin{aligned}
 Mo &= b + p \left[\frac{b_i}{b_1 + b_2} \right] \\
 &= 84,5 + 6 \left[\frac{10-7}{(10-7)+(10-6)} \right] \\
 &= 84,5 + 6 \left[\frac{3}{3+4} \right] \\
 &= 84,5 + 6 (0,42) \\
 &= 84,5 + 2,52 \\
 &= 87,02
 \end{aligned}$$

9. Making assist table deviation standard

Table 4.6

**Assist Table Deviation Standard Pre-test
in Experiment Class**

Interval	F	X	FX	(X- \bar{X})	(X- \bar{X}) ²	F(X- \bar{X}) ²
53 – 60	1	56,5	56,5	-24	576	576
61 – 68	2	64,5	129	-16	256	512
69 – 76	7	72,5	507,5	-8	64	448
77 – 84	10	80,5	805	0	0	0
85 – 92	6	88,5	531	8	64	384

93 100	– 4	96,5	386	16	256	1024
Σ	30		2415			2944

a. Accounting deviation standard

$$\begin{aligned}
 SD &= \sqrt{\frac{\sum f(x - \bar{x})^2}{N}} \\
 &= \sqrt{\frac{2944}{30}} \\
 &= \sqrt{98,13} \\
 &= 9,90
 \end{aligned}$$

b. Test normality of Pre-test in
Experiment Class

Table. 4.7

Test of Normality with Chi Square (X²)

c. Accounting X² (chi square), with
formula:

$$\begin{aligned}
 X^2_{\text{account}} &= \sum \frac{(O_i - E_i)^2}{E_i} \\
 &= \frac{(1-0,57)^2}{0,57} + \frac{(2-2,74)^2}{2,74} + \frac{(7-6,94)^2}{6,94} + \frac{(10-9,32)^2}{9,32} + \frac{(6-6,94)^2}{6,94} + \frac{(4-2,74)^2}{2,74} \\
 &= 0,32 + 0,19 + 0,01 + 0,04 + 0,12 + 0,57 \\
 &= 1,25
 \end{aligned}$$

- d. Looking for degree of freedom (df),
with formula:

$$Df = k - 3$$

$$= 6 - 3$$

$$= 3$$

- e. Determining X^2_{table} with
signification 5% and df (3)

$$X^2_{table} = (1 - \alpha) (df)$$

$$= (1 - 0,05) (3)$$

$$= (0,95) (3)$$

$$= 7.81$$

Based on the calculation above is
known that $X^2_{account} = 1,25$ and $X^2_{table} =$
7,81 so $X^2_{account} = 1,25 < X^2_{table} = 7,81$. The
concluded that the test (sample) of the
population is normal distribution.

b. Test Normality of Control Class

To investigate student's worksheet
gives and describes score in table with
formula:

Student's Final Score =

$$\frac{\text{Student's Raw Score}}{\text{Ideal Maximum Score (30)}} \times 100$$

Table 4.8

**Result of Pre-test and Post-test in
Control Class**

No	Name	Score	
		Pre-test	Post-test
1	AZA	23	27
2	AS	50	33
3	DM	37	37
4	Fdl	30	20
5	Fjr	43	30
6	FK	27	23
7	Frm	30	33
8	Hsn	30	33
9	IH	33	30
10	IA	37	40
11	LH	20	33
12	Lsy	37	20
13	Mht	33	43
14	Mrf	27	23
15	Mgw	17	17
16	Mua	23	20
17	Mnwr	23	27
18	Njm	27	23
19	Rhmt	20	30
20	Rst	23	30

21	Seperti	17	17
22	SG	20	40
23	SK	33	20
24	SS	30	27
25	Shr	17	17
26	Sry	33	50
27	Sym	30	23
28	TF	20	27
29	TNJ	33	33
30	Ikls	23	43

Based on the table above, the writer will arrange one by one from the lowest until high score from that table, as follows:

The Result of Pre-test in Control Class

1	1	1	2	2	2	2	2	2	2
7	7	7	0	0	0	0	3	3	3
2	2	2	2	2	3	3	3	3	3
3	3	7	7	7	0	0	0	0	0
3	3	3	3	3	3	3	3	4	5
3	3	3	3	3	7	7	7	3	0

1. Find out range, with formula

$$\begin{aligned}
 R &= H - L \\
 &= 50 - 17 \\
 &= 33
 \end{aligned}$$

2. Looking for the class interval, with formula:

$$\begin{aligned}
 K &= 1 + 3,3 (\log n) \\
 &= 1 + 3,3 (\log .30) \\
 &= 1 + 3,3 (1,48) \\
 &= 1 + 4,88 \\
 &= 5,88 = 6 \text{ (become)}
 \end{aligned}$$

3. Looking for the long class, with formula:

$$\begin{aligned}
 p &= \frac{R}{K} \\
 &= \frac{33}{6} \\
 &= 5,5 = 6 \text{ (become)}
 \end{aligned}$$

4. Making distribution frequency table

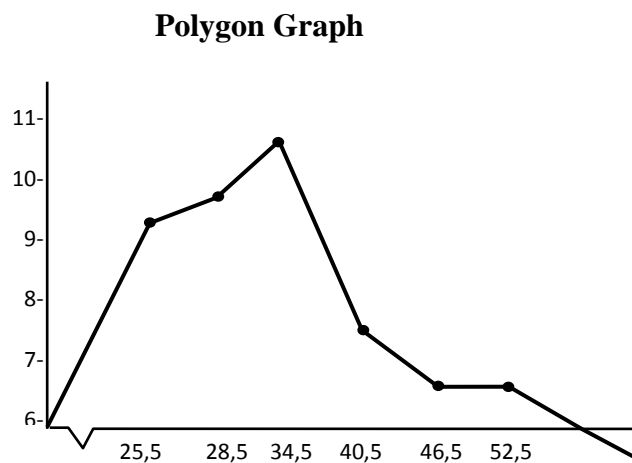
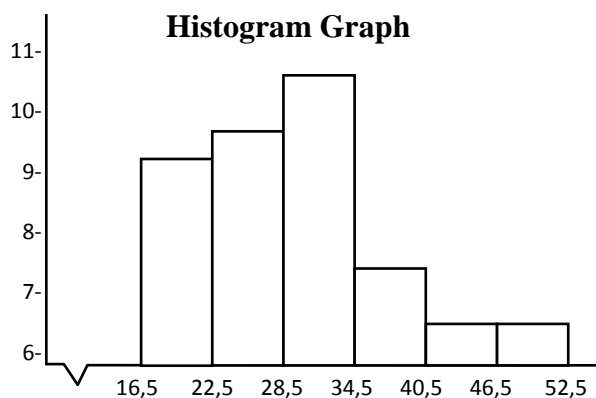
Table 4.9

Distribution Frequency

Interval	F	Fk _a	X	FX	Real Limit
17 – 22	7	7	19,5	136,5	16,5 – 22,5
23 – 28	8	15	25,5	204	22,5 – 28,5
29 – 34	10	25	31,5	315	28,5 – 34,5
35 – 40	3	28	37,5	112,5	34,5 – 40,5
41 – 46	1	29	43,5	43,5	40,5 – 46,5
47 – 52	1	30	49,5	49,5	46,5 – 52,5

					46,5
					46,5 –
					52,5
Σ	30			861	

5. Histogram and Polygon Graph



6. Looking for mean

$$\bar{X} = \frac{\sum FX}{\sum F} = \frac{861}{30}$$

$$= 28,7$$

7. Looking for median

$$Me = b + p \left\{ \frac{\frac{1}{2}N - Fka}{F} \right\}$$

$$= 34,5 + 6 \left\{ \frac{15 - 15}{10} \right\}$$

$$= 34,5 + 6 \left\{ \frac{0}{10} \right\}$$

$$= 34,5 + 6 (0)$$

$$= 34,5 + 0$$

$$= 34,5$$

8. Looking for mode

$$Mo = b + p \left[\frac{bi}{b1 + b2} \right]$$

$$= 34,5 + 6 \left[\frac{10 - 8}{(10 - 8) + (10 - 3)} \right]$$

$$= 34,5 + 6 \left[\frac{2}{2 + 7} \right]$$

$$= 34,5 + 6 (0,22)$$

$$= 34,5 + 1,32$$

$$= 35,82$$

9. Making assist table deviation standard

Table 4.10

Assist Table Deviation Standard Pre-test in Experiment Class

Interv al	F	X	FX	(X - \bar{X})	(X- \bar{X}) ²	F(X- \bar{X}) ²

17 –	7	19,	136,	-	84,6	592,
22	8	5	5	9,2	4	48
23 –	1	25,	204	-	10,2	81,9
28	0	5	315	3,2	4	2
29 –	3	31,	112,	2,8	7,84	78,
34	1	5	5	8,8	77,4	232,
35 –	1	37,	43,5	14,	4	32
40	1	5	49,5	8	219,	219,
41 –		43,		20,	04	04
46		5		8	432,	432,
47 –		49,			64	64
52		5				
Σ	30		861			1636,8

Table 4.11

Test of Normality with Chi Square (X^2)

Interval	Class Limit	Z_{account}	Z_{table}	LZ_{table}	E_i	O_i
17 – 22	16,5	-1,65	0,0495			
23 – 28	22,5	-0,84	0,2004			
29 – 34	28,5	-0,02	0,492			
35 – 40	34,5	0,78	0,7823			
41 – 46	40,5	1,59	0,9441			
47 – 52	46,5	2,41	0,992			
	52,5	3,22	0,9994			

a. Accounting deviation standard

$$\begin{aligned}
 SD &= \sqrt{\frac{\sum f(x - \bar{x})^2}{N}} \\
 &= \sqrt{\frac{1636,8}{30}} \\
 &= \sqrt{54,56} \\
 &= 7,38
 \end{aligned}$$

b. Test normality of Pre-test in Control Class

c. Accounting X^2 (chi square), with formula:

$$\begin{aligned}
 X^2_{\text{account}} &= \sum \frac{(O_i - E_i)^2}{E_i} \\
 &= \frac{(7 - 4,52)^2}{4,52} + \frac{(8 - 8,74)^2}{8,74} + \frac{(10 - 8,70)^2}{8,70} + \frac{(3 - 4,85)^2}{4,85} + \frac{(1 - 1,43)^2}{1,43} + \frac{(1 - 0,22)^2}{0,22} \\
 &= 1,36 + 0,06 + 0,19 + 0,70 + 0,12 + 2,76 = 5,19
 \end{aligned}$$

d. Looking for degree of freedom (df), with formula:

$$\begin{aligned} Df &= k - 3 \\ &= 6 - 3 \\ &= 3 \end{aligned}$$

e. Determining X^2_{table} with signification 5% and df (3)

$$\begin{aligned} X^2_{table} &= (1 - \alpha) (df) \\ &= (1 - 0,05) (3) \\ &= (0,95) (3) \\ &= 7,81 \end{aligned}$$

Based on the calculation above is known that $X^2_{account} = 2,48$ and $X^2_{table} = 7,81$ so $X^2_{account} = 2,48 < X^2_{table} = 7,81$. The concluded that the test (sample) of the population is normal distribution.

The Result of Post-test in Control Class

1	1	1	2	2	2	2	2	2	2
7	7	7	0	0	0	0	3	3	3
2	2	2	2	2	3	3	3	3	3
3	7	7	7	7	0	0	0	0	3
3	3	3	3	3	4	4	4	4	5
3	3	3	3	7	0	0	3	3	0

1. Find out range, with formula

$$\begin{aligned} R &= H - L \\ &= 50 - 17 \\ &= 33 \end{aligned}$$

2. Looking for the class interval, with formula:

$$\begin{aligned} K &= 1 + 3,3 (\log n) \\ &= 1 + 3,3 (\log 30) \\ &= 1 + 3,3 (1,48) \\ &= 1 + 4,88 \\ &= 5,88 = 6 \text{ (become)} \end{aligned}$$

3. Looking for the long class, with formula:

$$\begin{aligned} p &= \frac{R}{K} \\ &= \frac{33}{6} \\ &= 5,5 \\ &= 6 \text{ (become)} \end{aligned}$$

4. Making distribution frequency table

Table 4.12

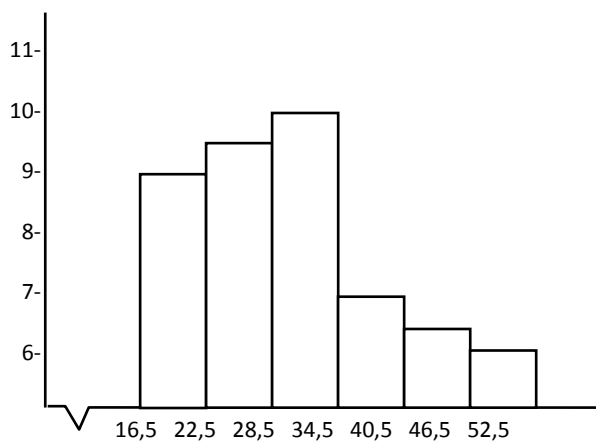
Distribution Frequency

Interval	F	Fk _a	X	FX	Real Limit
17 – 22	7	7	19,5	136,5	16,5 – 22,5
23 – 28	8	15	25,5	204	22,5 – 28,5
29 – 34	9	24	31,5	283,5	28,5 – 34,5
35 – 40	3	27	37,5	112,5	34,5 – 40,5
41 – 46	2	29	43,5	87	40,5 – 46,5

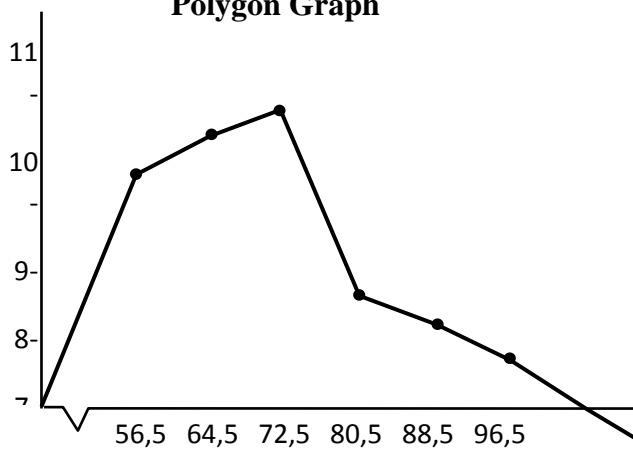
47 – 52	1	30	49,5	49,5	34,5 – 40,5
					40,5 – 46,5
					46,5 – 52,5
Σ	30			873	

5. Histogram and Polygon Graph

Histogram Graph



Polygon Graph



6. Looking for mean

$$\begin{aligned}\bar{x} &= \frac{\sum FX}{\sum F} \\ &= \frac{861}{30} \\ &= 28,7\end{aligned}$$

7. Looking for median

$$\begin{aligned}Me &= b + p \left\{ \frac{\frac{1}{2}N - Fka}{F} \right\} \\ &= 34,5 + 6 \left\{ \frac{15 - 5}{9} \right\} \\ &= 34,5 + 6 \left\{ \frac{0}{10} \right\} \\ &= 34,5 + 6 (0) \\ &= 34 + 0 \\ &= 34,5\end{aligned}$$

8. Looking for mode

$$\begin{aligned}Mo &= b + p \left[\frac{bi}{b1 + b2} \right] \\ &= 34,5 + 6 \left[\frac{9 - 8}{(9 - 8) + (9 - 3)} \right] \\ &= 34,5 + 6 \left[\frac{1}{1 + 6} \right] \\ &= 34,5 + 6 \left[\frac{1}{7} \right] \\ &= 34,5 + 6 (0,14) \\ &= 34,5 + 0,84 = 35,34\end{aligned}$$

9. Making assist table deviation standard

Table 4.13

Assist Table Deviation Standard
Post-test in Control Class

Interval	F	X	FX	(X - \bar{X})	(X - \bar{X}) ²	F(X - \bar{X}) ²
17 – 22	7	19,5	136,5	-9,2	84,64	592,48
23 – 28	8	25,5	204,0	-10,2	104,04	816,32
29 – 34	9	31,5	283,5	-3,2	10,24	92,16
35 – 40	3	37,5	112,5	7,84	61,46	184,38
41 – 46	2	43,5	87,0	8,8	77,44	154,88
47 – 52	1	49,5	49,5	14,8	219,04	219,04
Σ	30		861			1848

a. Accounting deviation standard

$$\begin{aligned}
 SD &= \sqrt{\frac{\sum f(x - \bar{x})^2}{N}} \\
 &= \sqrt{\frac{1848}{30}} \\
 &= \sqrt{61,6} \\
 &= 7,84
 \end{aligned}$$

b. Test normality of Post-test in Control Class

Table. 4.14

Test of Normality with Chi Square (X²)

Interval	Class Limit	Z _{account}	Z _{table}	L _{Z_{table}}	E _i	O _i
17 – 22	16,5	-1,55	0,0606			
23 – 28	22,5	-0,79	0,2148	0,1542	4,62	7
29 – 34	28,5	-0,02	0,492	0,2772	8,31	8
35 – 40	34,5	0,73	0,7673	0,2753	8,25	9
41 – 46	40,5	1,50	0,9332	0,1659	4,97	3
47 – 52	46,5	2,27	0,9884	0,0552	1,65	2
	52,5	3,03	0,9988	0,0104	0,31	1

c. Accounting X² (chi square),
with formula:

$$\begin{aligned}
 X^2_{\text{account}} &= \sum \frac{(O_i - E_i)^2}{E_i} \\
 &= \frac{(7 - 4,62)^2}{4,62} + \frac{(8 - 8,31)^2}{8,31} + \frac{(9 - 8,25)^2}{8,25} + \frac{(3 - 4,97)^2}{4,97} + \frac{(2 - 1,65)^2}{1,65} + \frac{(1 - 0,31)^2}{0,31} \\
 &= 1,22 + 0,01 + 0,06 + 1,78 + 0,07 + 1,53 = 3,67
 \end{aligned}$$

- d. Looking for degree of freedom (df), with formula:

$$\begin{aligned} Df &= k - 3 \\ &= 6 - 3 \\ &= 3 \end{aligned}$$

- e. Determining X^2_{table} with signification 5% and df (3)

$$\begin{aligned} X^2_{table} &= (1 - \alpha) (df) \\ &= (1 - 0,05) (3) \\ &= (0,95) (3) \\ &= 7,81 \end{aligned}$$

Based on the calculation above is known that $X^2_{account} = 3,67$ and $X^2_{table} = 7,81$ so $X^2_{account} = 3,67 < X^2_{table} = 7,81$. The concluded that the test (sample) of the population is normal distribution.

2. T-Test

After having getting the data from the post-test score of two classes, then the writer analyzed it by using T-test formula:

Table 4.15

The Calculation Scores of Each Students In Experiment and Control Class

N	X_1	X_2	X_1	X_2	X_1^2	X_2^2
1	53	1	-	-	763,4	143,0
			27,6	11,9		

		7	3	6		
2	63	1	-	-	310,8	143,0
		7	17,6	11,9		
			3	6		
3	67	1	-	-	185,7	143,0
		7	13,6	11,9		
			3	6		
4	70	2	-	-	112,9	80,2
		0	10,6	8,96		
			3			
5	70	2	-	-	112,9	80,2
		0	10,6	8,96		
			3			
6	70	2	-	-	112,9	80,2
		0	10,6	8,96		
			3			
7	73	2	-	-	58,2	80,2
		0	7,63	8,96		
8	73	2	-	-	58,2	35,5
		3	7,63	5,96		
9	73	2	-	-	58,2	35,5
		3	7,63	5,96		
10	73	2	-	-	58,2	35,5
		3	7,63	5,96		
11	77	2	-	-	13,1	35,5
		3	3,63	5,96		
12	77	2	-	-	13,1	3,8

		7	3,63	1,96		
13	77	2	-	-	13,1	3,8
		7	3,63	1,96		
14	80	2	-	-	0,3	3,8
		7	0,63	1,96		
15	80	2	-	-	0,3	3,8
		7	0,63	1,96		
16	80	3	-	1,04	0,3	1,0
		0	0,63			
17	83	3	2,37	1,04	5,6	1,0
		0				
18	83	3	2,37	1,04	5,6	1,0
		0				
19	83	3	2,37	1,04	5,6	1,0
		0				
20	83	3	2,37	4,04	5,6	16,3
		3				
21	87	3	6,37	4,04	40,5	16,3
		3				
22	87	3	6,37	4,04	40,5	16,3
		3				
23	87	3	6,37	4,04	40,5	16,3
		3				
24	90	3	9,37	4,04	87,7	16,3
		3				
25	90	3	9,37	8,04	87,7	64,6

		7				
26	90	4	9,37	11,0	87,7	121,8
		0		4		
27	10	4	19,3	11,0	375,1	121,8
	0	0	7	4		
28	10	4	19,3	14,0	375,1	197,1
	0	3	7	4		
29	10	4	19,3	14,0	375,1	197,1
	0	3	7	4		
30	10	5	19,3	21,0	375,1	442,6
	0	0	7	4		
Σ					4117,7	2137,5

Based on the data above is known that:

$$\Sigma X_1 = 2419 \quad \Sigma X_1^2 = 4117,7$$

$$\Sigma X_2 = 869 \quad \Sigma X_2^2 = 2137,5$$

To find the different of using Circle game in teaching English vocabulary between Post-test in experiment class (X_1) and Post-test in Control class (X_2) is used the technique t-test as follows:

1. Determine mean of variable X_1 , with formula:

$$M_1 = \frac{\Sigma X_1}{N}$$

$$M_1 = \frac{2419}{30} = 80,63$$

2. Determine mean of variable X_2 , with formula:

$$M_2 = \frac{\sum X_2}{N}$$

$$M_2 = \frac{869}{30} = 28,96$$

3. Determine t-test, with formula:

$$t_0 = \frac{M_1 - M_2}{\sqrt{\frac{(\sum X_1^2 + \sum X_2^2)(N_1 + N_2)}{(N_1 + N_2 - 2)(N_1 \cdot N_2)}}$$

$$t_0 = \frac{80,63 - 28,96}{\sqrt{\frac{(4117,7 + 2137,5)(30 + 30)}{(30 + 30 - 2)(30 \times 30)}}$$

$$t_0 = \frac{51,67}{\sqrt{\frac{(6255,2)(600)}{(58)(900)}}$$

$$t_0 = \frac{51,67}{\sqrt{(107,84)(0,06)}}$$

$$t_0 = \frac{51,67}{\sqrt{6,47}}$$

$$t_0 = \frac{51,67}{2,54} = 20,34$$

4. Determining t with signification 5%

$$df = N_1 + N_2 - 2$$

$$= 30 + 30 - 2$$

$$= 58$$

$$= 2,00$$

5. Determinug with signification 1%

$$df = N_1 + N_2 - 2$$

$$= 30 + 30 - 2$$

$$= 58$$

$$= 2,65$$

From the result of calculation above is known that t_{table} with level significance 5% = 2,00 and with level significance 1% = 2,65, so $t_{observation} = 20,34 > t_{table} = 2,00$ or $t_{observation} = 20,34 > t_{table} = 2,65$. The concluded that the writer rejects $H_0 : t_0 < t_t$: it means there is no influence of using pronunciation bingo game in teaching English pronunciation and receives $H_a : > t_t$: it means there is influence of using pronunciation bingo game in teaching English pronunciation.

I. Interpretation of Data

This analysis purposed to know how far is the influence of using pronunciation to improve students' pronunciation. From the result of research that the mean of pre-test score gained by students in class VII A as experiment class 33,3 was higher than in class VII B as control class 28,7. The highest score of pre-test in class VIIA as experiment class 53, the lowest score of pre-test in class VIIA as experiment class 20 and the highest score of pre-test in class VIIB as control class 50, the lowest score of pre-test in class VIIB as control class 17. So, the distribution of scores in class VIIA as experiment class was higher than in class VIIB as control class.

The mean of post-test score gained by students in class VIIA as experiment

class 80,5 was higher than in class VIIB as control class 28,7. The highest score of post-test in class VIIA as experiment class 100, the lowest score of post-test in class VIIA class 53 and the highest score of post-test in class VIIB as control score of post-test in class VIIB as control class 17. So, the distribution class VIIA as experiment class was higher than in class VIIB as control class.

From the interpretation of data above can be concluded that using the pronunciation bingo game to improve students' pronunciation will be better and more effective to introduce new pronunciation and to improve students' pronunciation than teaching pronunciation without using pronunciation bingo game.

CONCLUSION

Based on the research entitled “ The Use of Pronunciation Bingo Game To Improve Students' Pronunciation ” at The First grade in MTs Alkheriyah Kepandean Ciruas Serang, the writer concludes that :

1. The analysis result about the use of pronunciation bingo game to improve students' pronunciation, has shown that to experiment class is higher than to control class. It means that the use of pronunciation bingo game has

significant increase on the improvement of students' pronunciation.

2. From the result of pre-test and post- test between experiment class and control class the writer knows that the students' pronunciation by using pronunciation bingo game is better than students' without using pronunciation bingo game in their pronunciation.
3. On the research analysis, the use of pronunciation bingo game to improve students' pronunciation is applicable for learning pronunciation. It proven by development result of students' pre-test and post-test between experiment class and control class, that shown the application of using pronunciation bingo game.

REFERENCES

- Hadfield ,Jill, *Advanced Communication Game*, Harlow : DP Press, 1996
- Hancock, Mark, *Pronunciation Game*, Newyork : Cambridge University Press, 1996
- Hornby As, *Oxford Advanced Learners' Dictionary of Current English*, Newyork : Oxford University Press , 1974.
- Kelly, Gerald, *How to Teach Pronunciation* ,England: Lognman , 2000

Kenworthy ,Joanne , *Teaching English Pronunciation*, Newyork : Logman Group

Nunan David, *Methode in Language Learning*, Newyork: Cambridge University Press, 1992

Rasmusen, Eric ,*Games and information, forth Edition*, Australia:Blackwell,2007

Wright, Andrew ,David Betteridge and Michail Bockby,Games For Language Learning Network : Cambridge University Press , 2006

